

## Identification: Dogs



### **Afghan Hound: Hound Group**

- Origin: Afghanistan, ancient times
- Introduction into the United States: 1900s
- Height: Male: 27 in., female: 25 in.
- Weight: Male: 60 lb., female: 50 lb.
- Coat: Thick, silky hair. Feathered ears and feet
- Color: Can be any color except spotted
- Dignified appearance with a straight front



### **Basenji: Hound Group**

- Origin: Central Africa, ancient times
- Introduction into the United States: 1930s
- Height: Male: 17 in., female: 16 in.
- Weight: Male: 24 lb., female: 22 lb.
- Coat: Short-haired
- Color: Can be chestnut red, pure black, tri-color or brindle with white feet



### **Basset Hound: Hound Group**

- Origin: France, 1500s
- Introduction into the United States: 1800s
- Height: Male and female 14 in.
- Weight: Male and female 40-60 lb.
- Coat: Close fitting, medium length coat.
- Color: Can be black and white, black and brown, lemon and white, mahogany and white, or red and white.
- Short legged, heavy boned, loose skin, and long low set ears



### **Beagle: Hound Group**

- Origin: England, 1300s
- Introduction into the United States: 1642
- Height: Male and female 13-15 in. max
- Weight: Male and female 18-30 lb.
- Coat: Medium length, hard coat
- Color: Can be a mixture of multiple colors

## Identification: Equipment and Materials



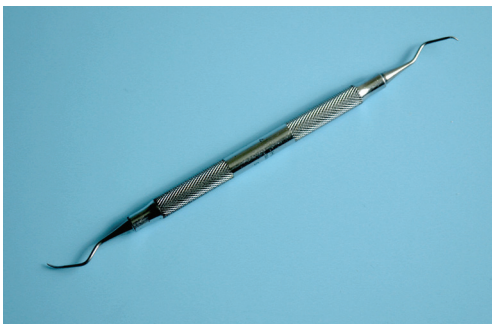
Dehorner - Barnes



Dehorner - Electric



Dental float



Dental scaler



Drench gun - small ruminant



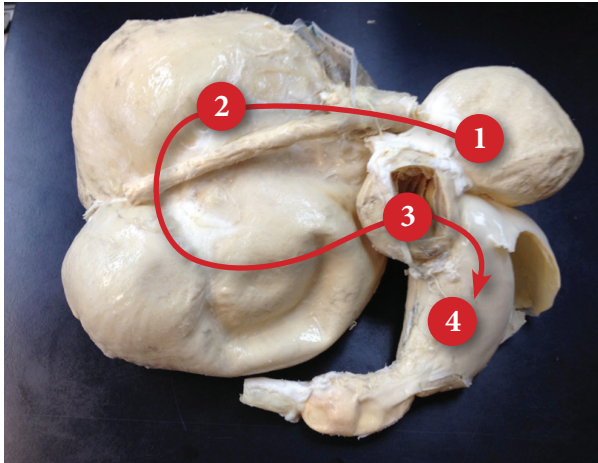
Ear notcher



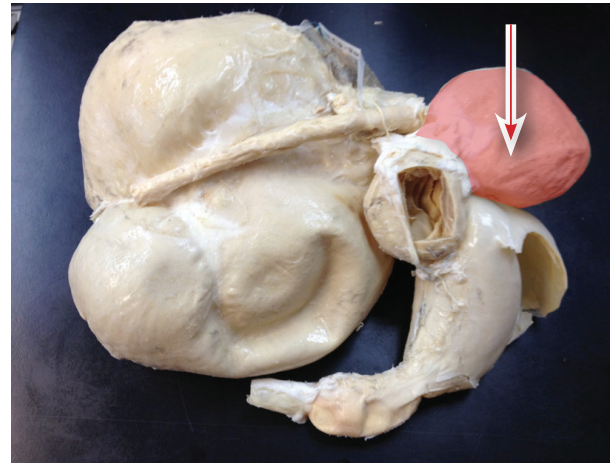
Ear elastrator



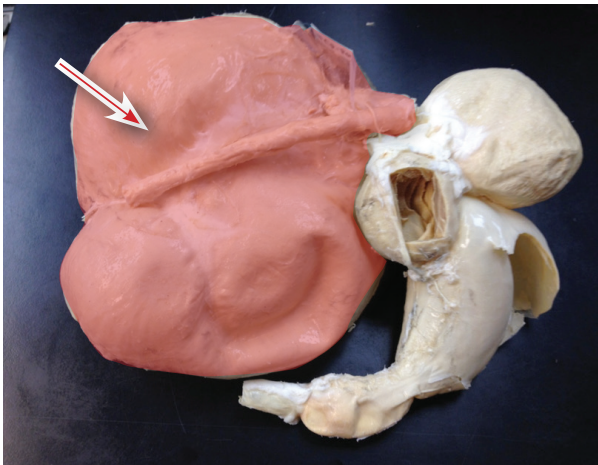
## Identification: Internal Organs



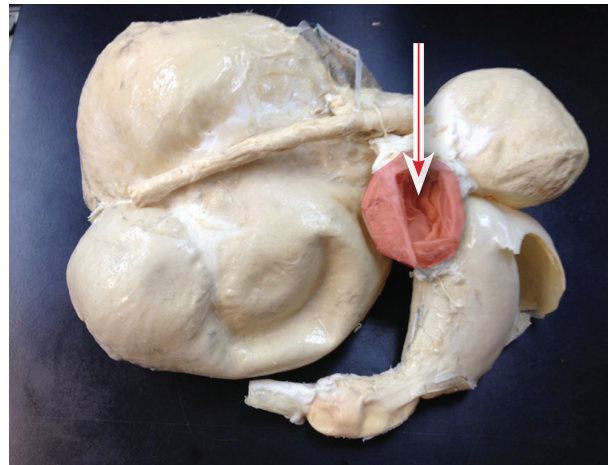
Stomach (Ruminant) route of digestion



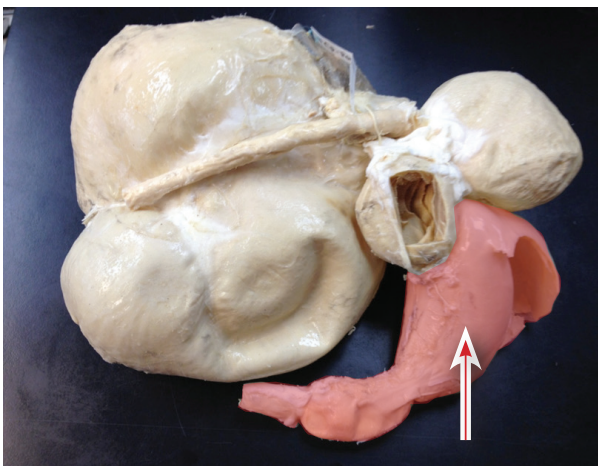
1. Reticulum



2. Rumen



3. Omasum



4. Abomasum



Testicle